



# GAT MONTHLY MEMBERSHIP PROGRESS REPORT

Results as of: 1/31/2024

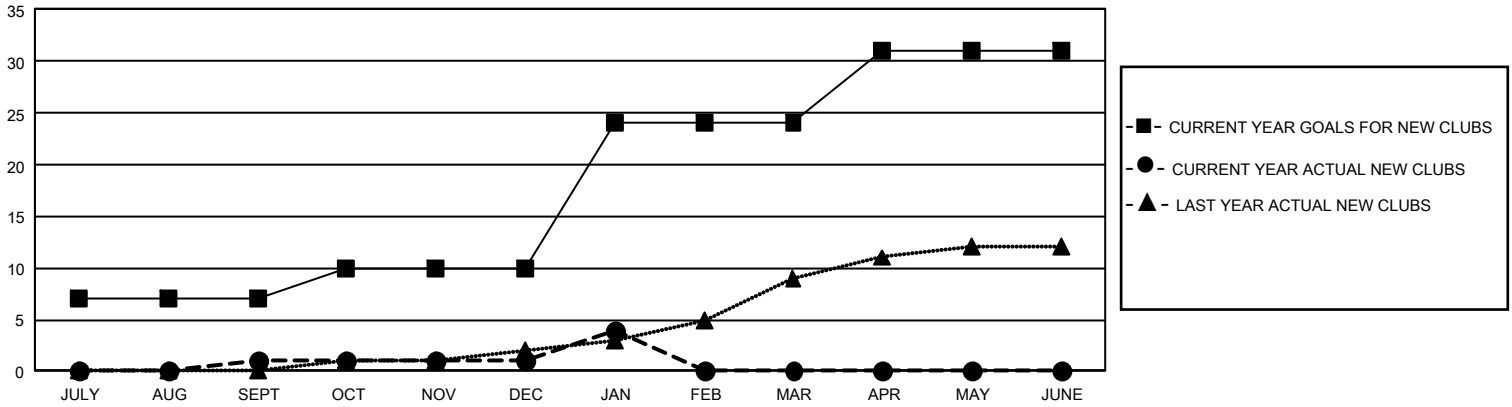
## GMT Constitutional Area 5 - J, Group G

REPORT DOES NOT INCLUDE CLUBS IN UNDISTRICTED AREAS.

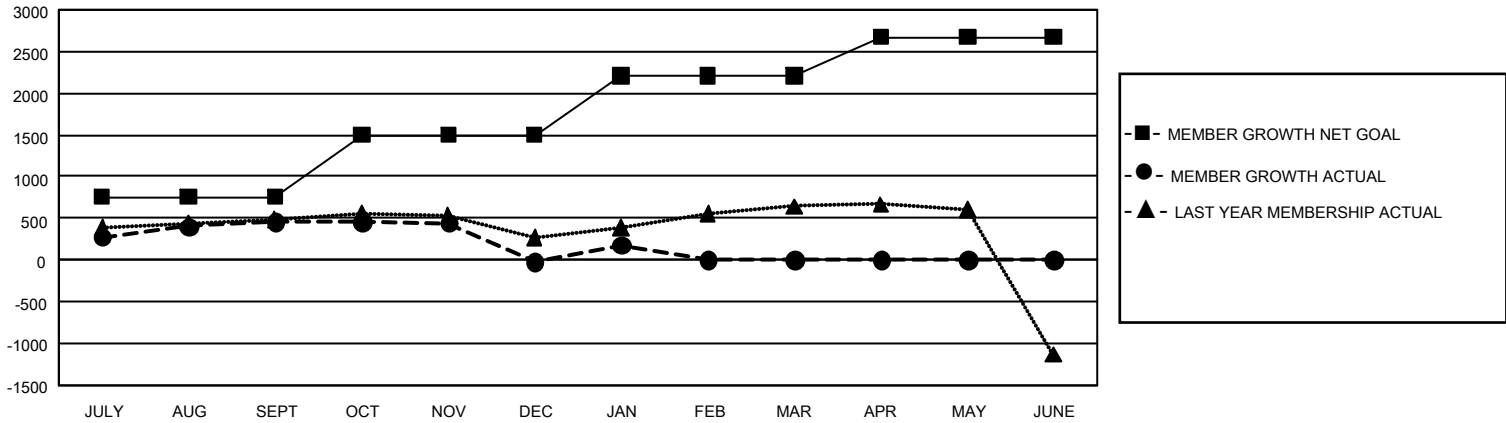
Clubs			
RESULTS FOR 2023-2024			
QUARTER	NEW CLUB GOAL	NEW CLUBS	DROPPED CLUBS
JULY/AUG/SEPT	21	1	0
OCT/NOV/DEC	9	0	4
JAN/FEB/MAR	42	3	2
APR/MAY/JUNE	21	0	0

Members			
RESULTS FOR 2023-2024			
QUARTER	MEMBER GROWTH NET GOAL	MEMBER GROWTH ACTUAL	DROPPED MEMBERS ACTUAL (including transfers)
JULY/AUG/SEPT	758	1,169	661
OCT/NOV/DEC	743	474	920
JAN/FEB/MAR	712	385	182
APR/MAY/JUNE	462	0	0

GOALS AND ACTUAL NEW CLUBS CUMULATIVE



GOALS AND ACTUAL MEMBERS CUMULATIVE



<b>DROPPED CLUBS: 6</b>	687 CLUBS OF 1,258 ADDED 1 OR MORE NEW MEMBERS	<b><u>GENDER DISTRIBUTION</u></b>	
		MALE 30,068 (76.67%) FEMALE 9,147 (23.32%) NON BINARY 0 (0.00%) PREFER NOT TO ANSWER 2 (0.01%)	
<b><u>DROPPED MEMBERS</u></b>		<a href="#">CLICK HERE FOR CUMULATIVE MEMBERSHIP DATA</a>	TOTAL FAMILY UNIT MEMBERS 12,302
DECEASED 209 CLUB CANCELLED 0 OTHER 1,554 <b>TOTAL 1,763</b>	FAMILY MEMBERS PAYING HALF DUES 6,954		